

ABW
architects
Yearbook Ten

10

ABW at 10

This yearbook picks up where the last one left off, showing how we have continued to work on a wide range of interesting projects.

We work with our clients to develop their ideas, to share our experience and enthusiasm and to add value whatever the scale of the project.

We aim to create inspiring spaces that work well and enhance everyday life for those who use, work or live in them.

Working closely with consultants and contractors, we provide deliverable and sustainable solutions that meet and exceed client expectations.

We believe in the value of collaboration and teamwork, bringing people together to resolve issues in the creation of the environment around us.

Why not get in touch to see how we can help realise your ideas and become part of the next 10 years. We would enjoy the opportunity to talk to you about your next project.

ABW

“We aim to create
inspiring spaces that
work well and enhance
everyday life for those
who use, work or live
in them.”



Southport College

Value: £2m

Completed: September 2014



Improved street elevation

Refurbishment of a 1970's 5 storey teaching building. The aim was to transform the appearance, radically improve performance and reinforce the College's brand. New picture windows frame views, opening the building to the street for better connection and reinforce the college's brand.





Top lit interior of sports hall.







Edge Hill University Sports Centre

Value: £12m
Completed: September 2015

Design of the sports facilities form part of a masterplan that extended the University campus into greenbelt. This building was a compliant use in the greenbelt, hence the fragmented form burrowing into the landscape to minimise the apparent size of what is a large building with large volumes.

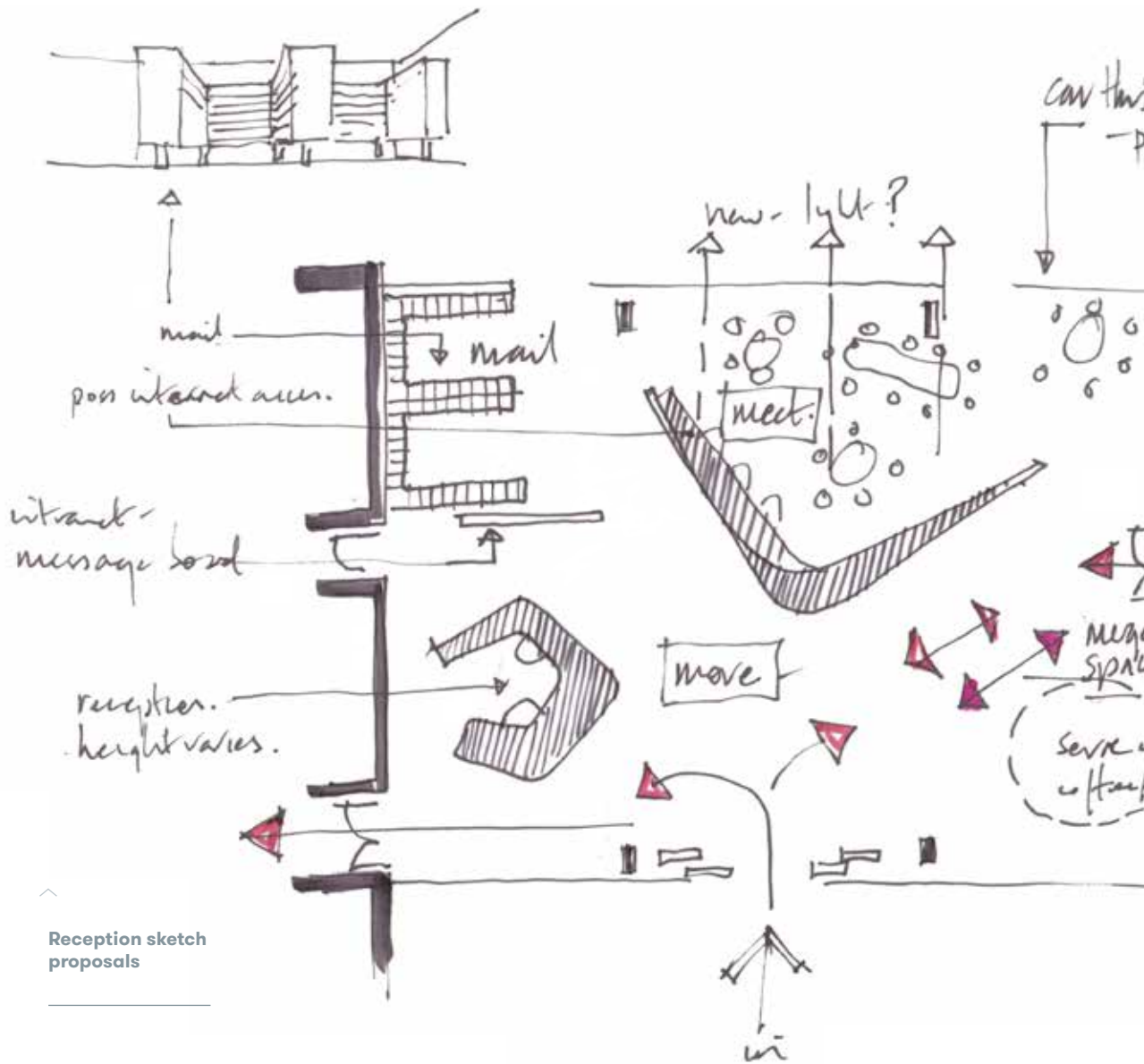
The 8 court sports hall, 8 lane swimming pool and 100 station gym were expressed as volumes of different materials, set back from the road reducing the mass further. Its open 'arms' to the south catch sun and shelter from the wind. New running track, rugby, hockey, tennis and football pitches were also completed.



^
Entrance canopy

New running track and sports pitches





Reception sketch proposals



it will be trans-
parent



Finished
reception



Shared kitchen
spaces



Imperial College London Student Accommodation

Completed: September 2015

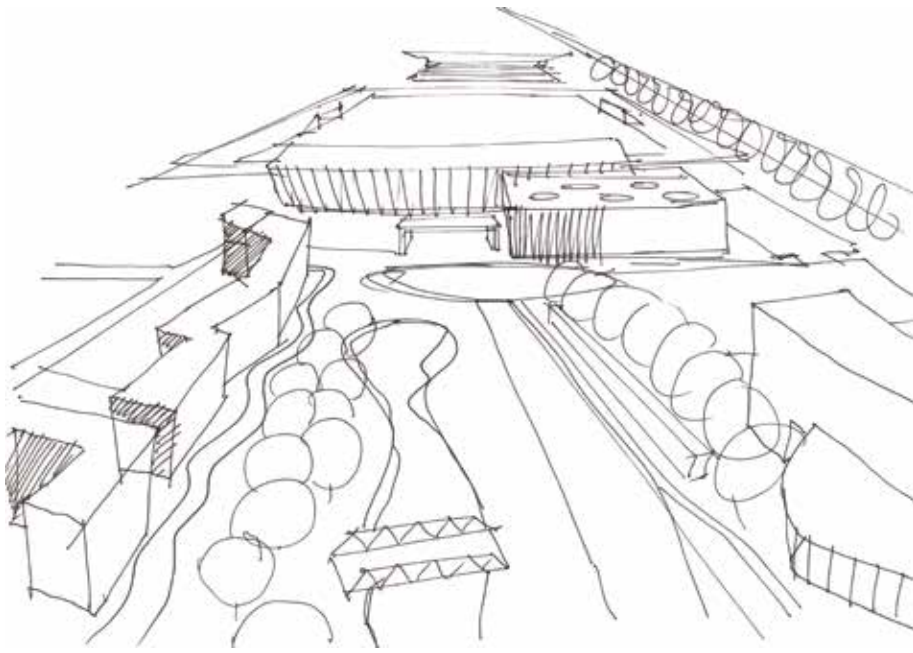
ABW was appointed as interior architects to design the 7 bedroom types and kitchen spaces in the 670 unit scheme. We also designed ground floor accommodation consisting of reception, conference area, café, restaurant, gym, bar and common room areas.



Site overview >



Perspective view





Masterplan Sketch Scheme

An ecological extension to a market town integrating green space with sports facilities. A football club was repositioned, green corridor and swale brought into the heart of this scheme to give focus to the surrounding mix of 2/ 3 bed housing and flats. Sheltered housing and health care projects are outlined for this site along with improved sporting facilities.

“New ecological habitat created at the heart of the scheme.”



Housing

“We aim
to create
considered
spaces for
people to live.”

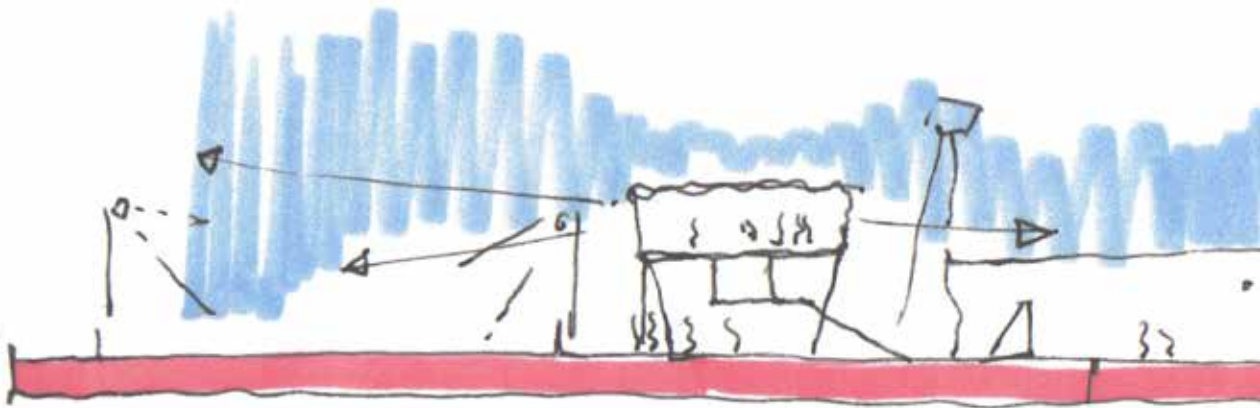
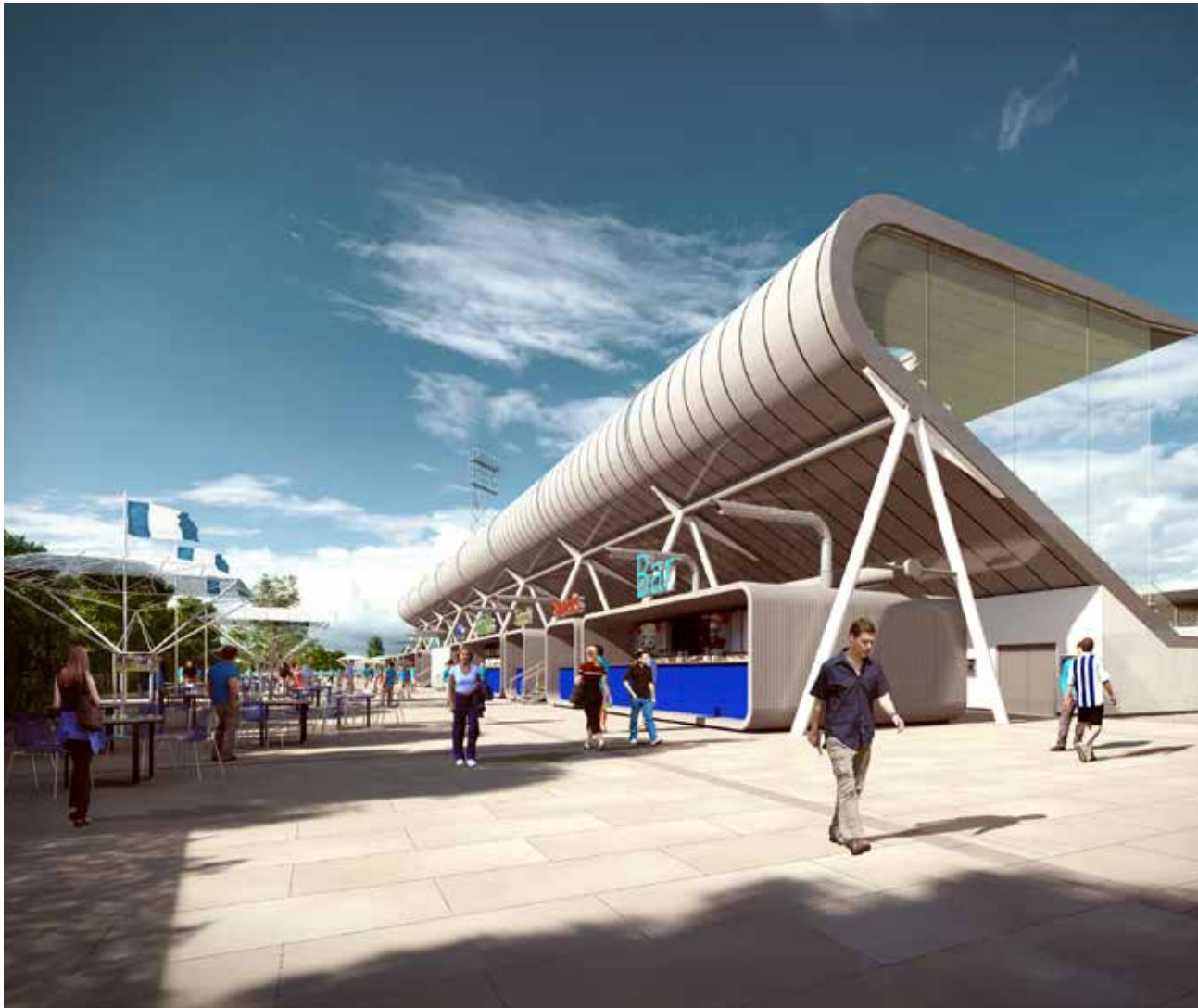
With a background in social and sheltered housing, ABW has worked on multiple master plan and housing schemes at a variety of scales. We have undertaken feasibility studies, secured planning consents and delivered schemes on site.

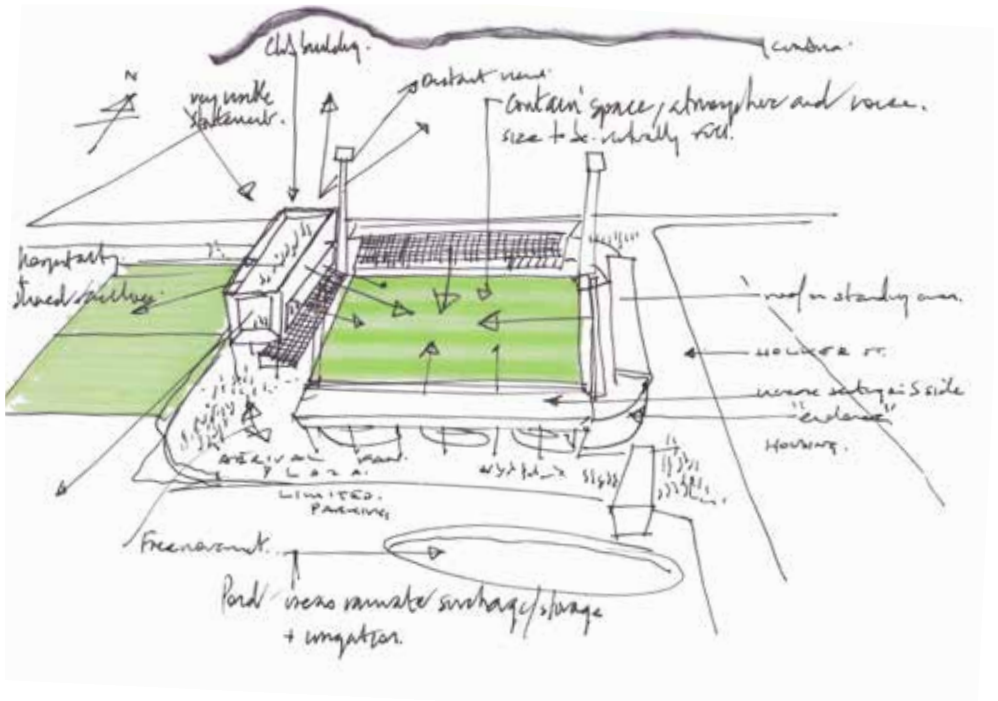


Sketch layout

Feasibility study for town centre mixed use development





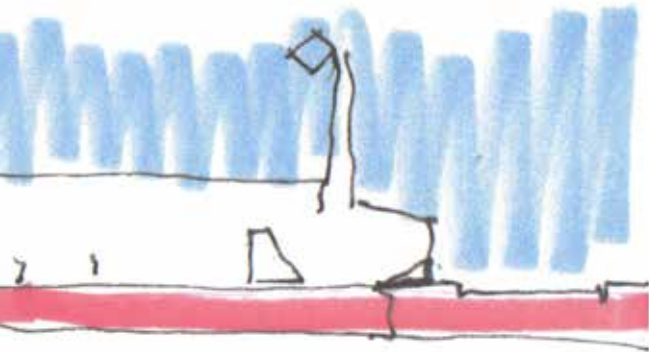


Football Club

Separate stands allow the club to upgrade and expand over time. Creating a 'fan zone' plaza extends the match day experience and provides an event space for non-match days. Positioning hospitality accommodation at the centre of the site provides the wider community with views of the pitches and training facilities.



“Extending a Fanzone between the facilities creates a space for events and celebration.”



< Sketch section hospitality overlooking match and training pitch spaces



Vibrant entrance area to library spaces.



St. Helens College





Joinery detail



Group workspace



< **Central
congregation
space**

Library St Helens College

Value: £1.2m
Completed: September 2015

ABW has worked with St Helens College to re-imagine their library. As a former factory for Beecham's, the building was dark and uninviting. The design re-organises the ground floor, removing cellular rooms and creating bright, open areas for group work and social learning. The existing 4-storey atrium is used to create a focus for the space, while book stacks separate the quieter areas for individual study.



Tired and dated 1960's facade is rejuvenated with a smooth glass curtain wall.



Cadman Building Staffordshire University

Value: circa £8m
Completed: September 2016

The scheme adapts several high profile buildings within the centre of Stoke to form the new Faculty of Arts and Creative Technologies, bringing together art, animation, gallery spaces, TV and music from other sites.

The central courtyard between the buildings acts as circulation and a focus for activities. The scheme improves the buildings' frontage. The refurbishment of the buildings transforms the internal spaces, increasing the building's capacity and providing disabled access.



Refurbished
courtyard
circulation space





**Improved
accessible
entrance**

“The courtyard provides sheltered amenity spaces and seating. Existing elevations are calmed and coordinated to bring a restful order to the public space.”



Refreshed library and corridor spaces.







Technology Centre St. Helens College

Value: £1m
Completed: April 2016

ABW's interventions were designed to change the building from being a cellular compartmented place to a light and open space.

Circulation routes were opened up and solid walls replaced with full height glass.

A new library space was created from the former entrance, a three storey high space with a dramatic new stair, individual and group study spaces with enhanced IT facilities.



Views out over
ponds and
countryside



“Where possible, we work with the existing setting to enhance our buildings and the environment.”



Building courtyards arranged around mature planting

Edge Hill University Student Accommodation

Value: £8.5m
Completed: September 2016

148 en-suite student bedrooms were arranged in courtyard clusters amongst existing planting and water features. Large windows give views to the surrounding countryside.



Arnot St Mary's Primary School

Value: £400k

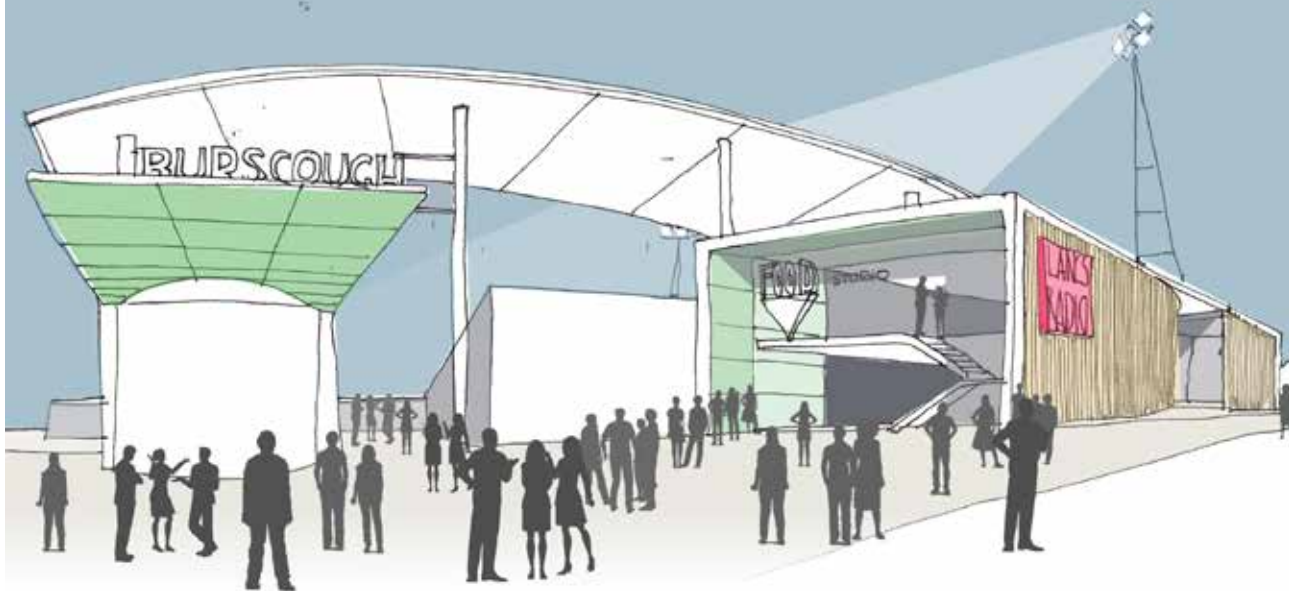
Completed: October 2016

A new, zinc clad, chapel space was created on a tight site next to a railway line for a Victorian primary school in North Liverpool. Classrooms were combined to create a new library with mezzanine space whilst retaining the school's original features.



Reading nook
with bookcases
and joinery





Burscough Football Club Proposals

New Football Stadium and training pitches with covered stands are planned for the Club. The scheme provides club facilities with hospitality and changing, enabling community use and future expansion as the club grows.





“Works to upper floors to restore, render and resolve complex damage issues.”

Original balcony reinstated

Princes Park Mansions

Completed: Summer 2018

The restoration of a Grade II Listed building in Toxteth, Liverpool, has involved the renewal of the roof and re-rendering of the façades. Stonework repairs and the reinstatement of an original balcony were also undertaken. ABW worked closely with contractor, sub-contractors and the 40 households to deliver this scheme in a phased approach.





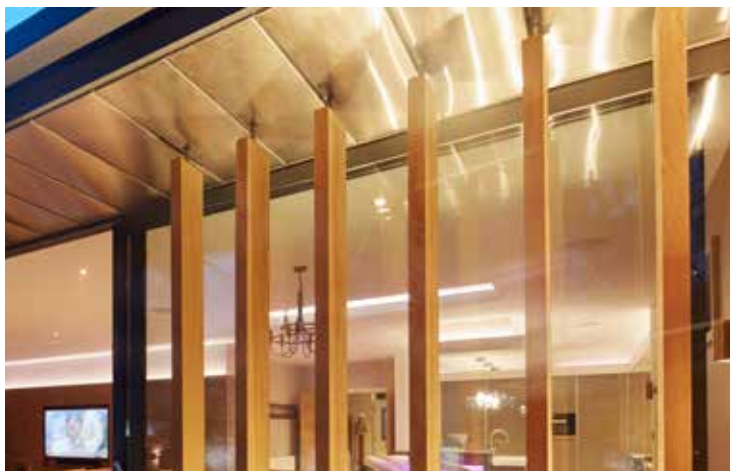
Laboratory spaces

Edge Hill University Technology Hub

Value: £7.5m
Completed: September 2016

Creation of a 3,000m² teaching building. Spaces include a super immersive 3D virtual environment room and specialist laboratories. Different materials are used to break down the volume of the design near neighbouring housing. Situated in a conservation area, the design takes advantage of existing planting on a tight site.







Residential Extension

Completed: December 2016

Extension and refurbishment of a South Liverpool home to create large kitchen, dining and living spaces overlooking a private garden.

^
10m wide windows connecting to garden

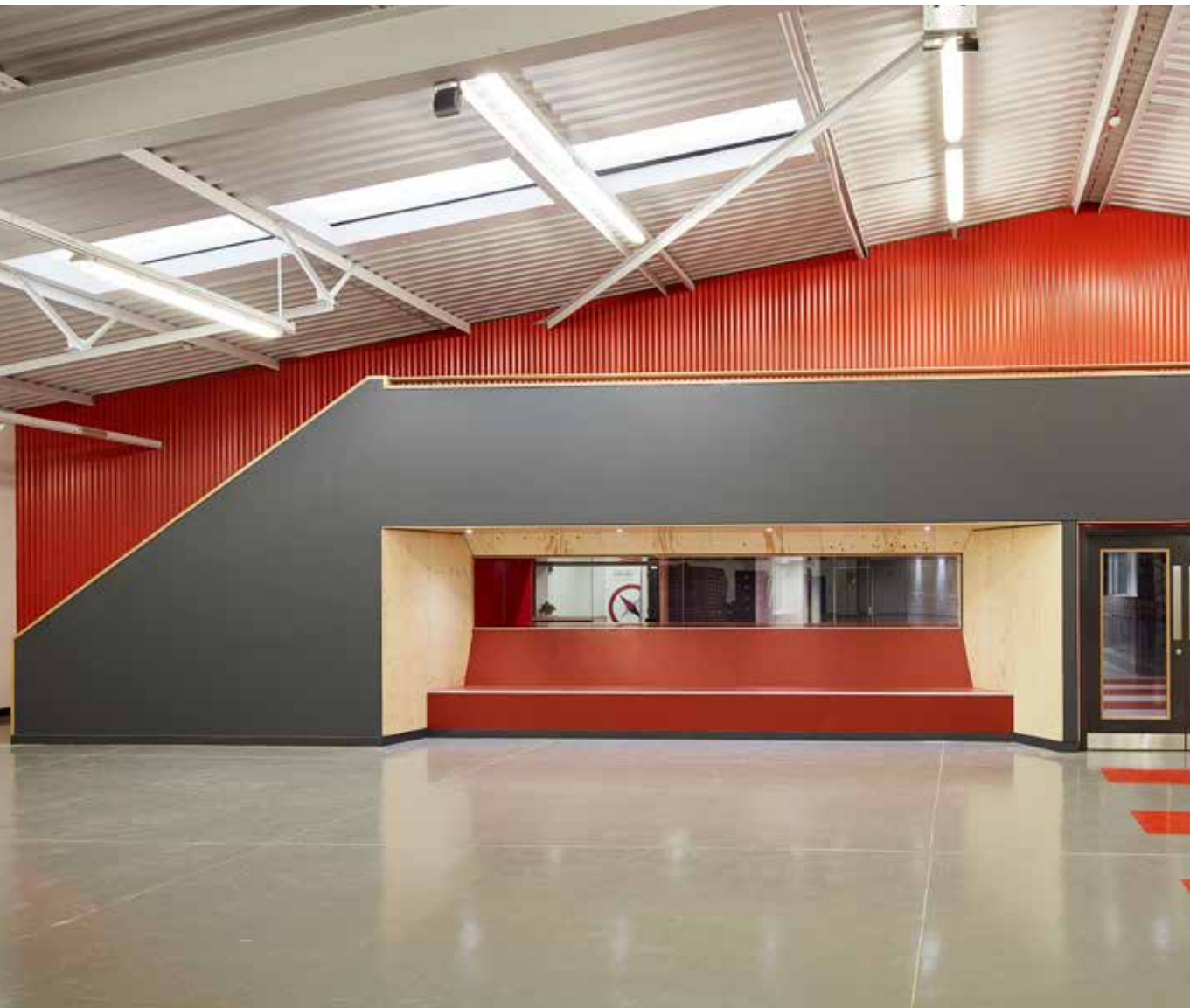


<
Window surround detail



Arrival space to class rooms and training facility.





**Waiting and
viewing area
over main space**



**Access to
classroom
spaces**



“Robust materials in an industrial space are used to create a vibrant space in which to learn.”

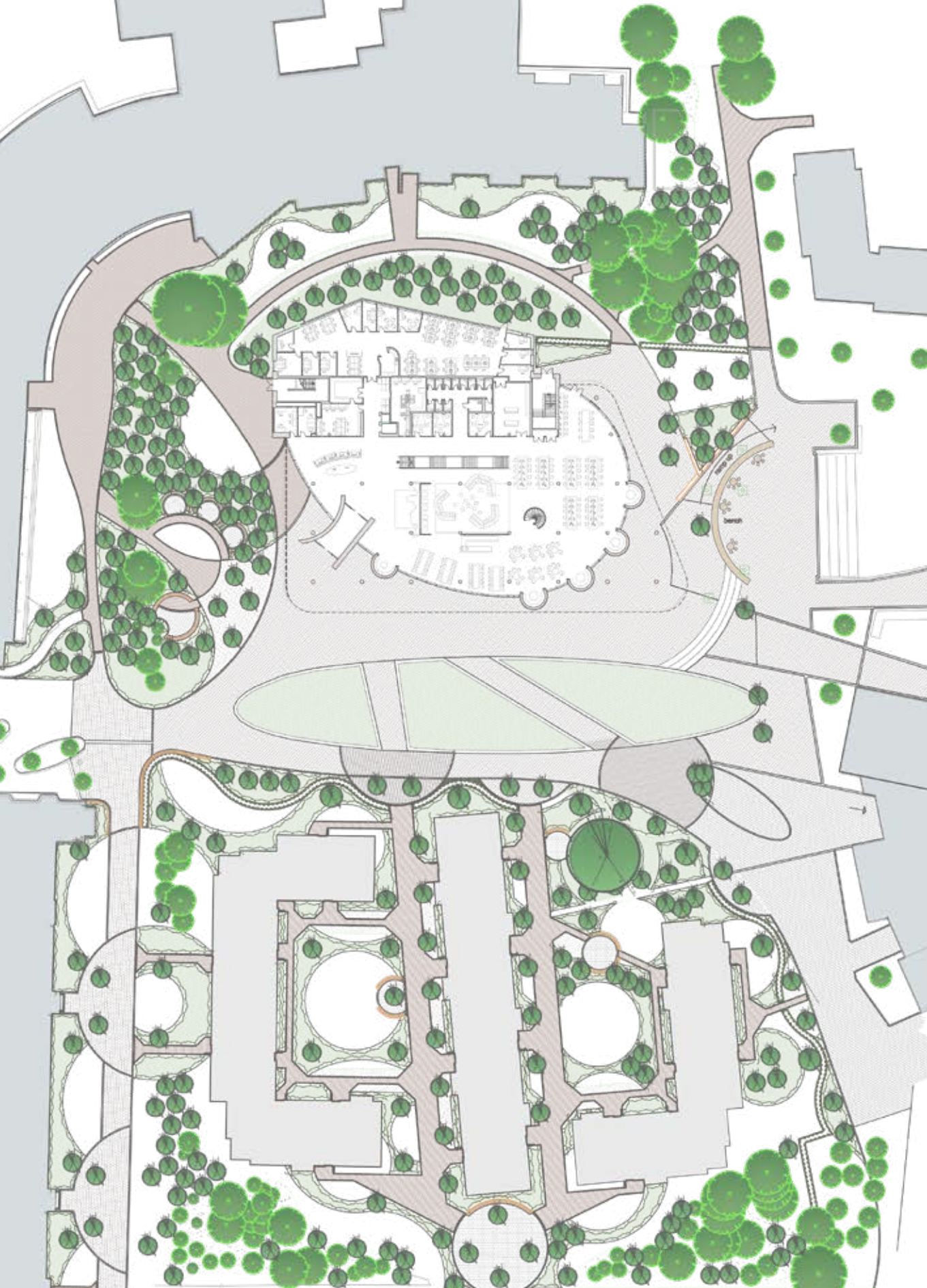


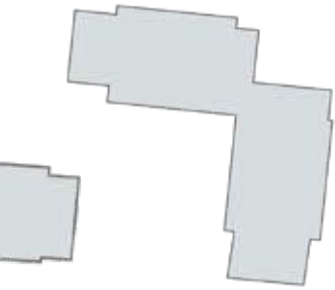
A reception window detail

St Helens College Logistics Academy

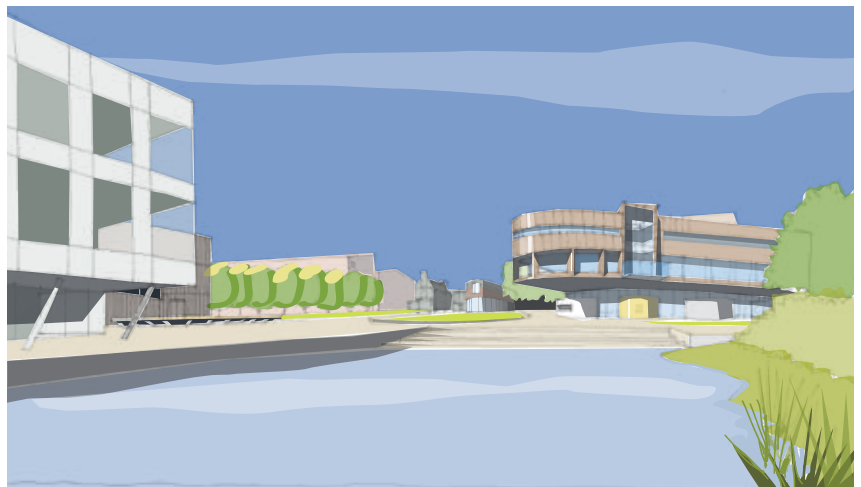
Value: £650k
Completed: September 2016

ABW designed and delivered the refurbishment of an existing warehouse to become bright, open, high quality practical teaching spaces. A combination of robust, industrial materials and vibrant colours, complimented by high specification, full height glazed screens, establish a radical transformation to the internal space.





Perspective sketch >



Edge Hill University Catalyst Building

Value: £26m
Completing: September 2018

The new £26m Library building at Edge Hill University is currently under construction and due to open September 2018.

A large, glazed ground floor provides café and social learning spaces with views out to landscaped learning areas.

First and second floors hold book stacks and study spaces. The third floor houses a silent study area and a roof garden with views out over the campus and countryside.





< **Courtyard
garden**

Edge Hill University PH12 Student Accommodation

Value: £14m
Completed: September 2017

Conceived as townhouses for second and third year students, in groups of 8 or 12, with shared kitchen, living and dining spaces. The houses are arranged around a formal courtyard, creating a quiet garden off a busy campus thoroughfare.

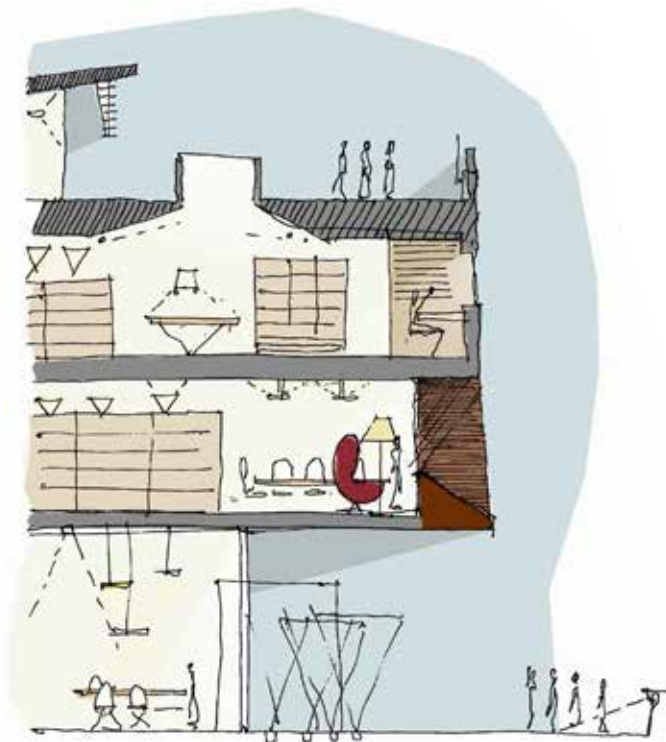
< **Bay window
detail**





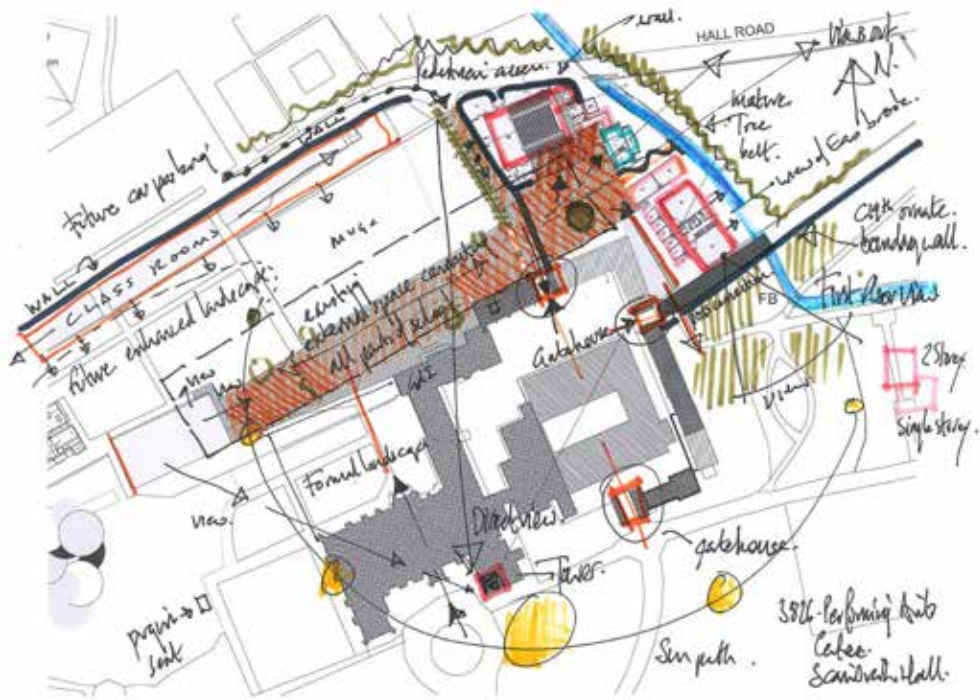
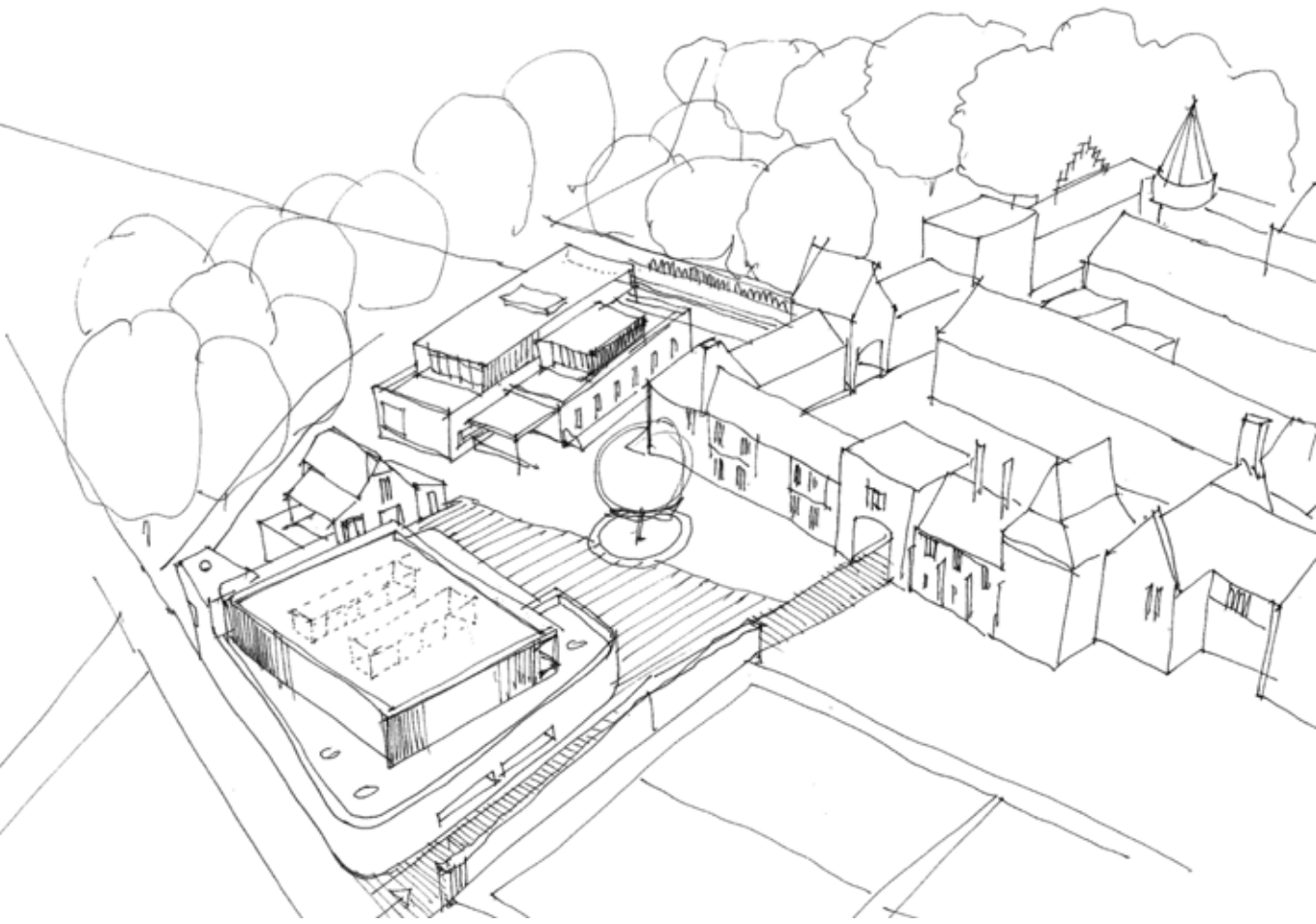
**Lively ground
floor spaces**





University Library

The design breaks away from the conventional idea of 'Library' as institution. Ground floor spaces are warm and welcoming with an emphasis on social learning and interaction. Facilities include a cafe, exhibition spaces and student support services. Bespoke furniture is designed for group, individual and silent study areas.





**New courtyard
spaces**

Scarisbrick Hall Performing Arts

In the creation of a new performing arts venue and teaching spaces, utmost care was taken to integrate the scheme to its woodland setting, extending the busy campus alongside an adjacent Grade 1 Listed Building.

**Pugin's Tower
(19th Century)**





The Pavilion House

Sketch design for a replacement dwelling. Living accommodation is housed in a 'pavilion' set in a private rear garden. Courtyard spaces to the sides give aspect to bedrooms and set the building back from neighbouring properties.

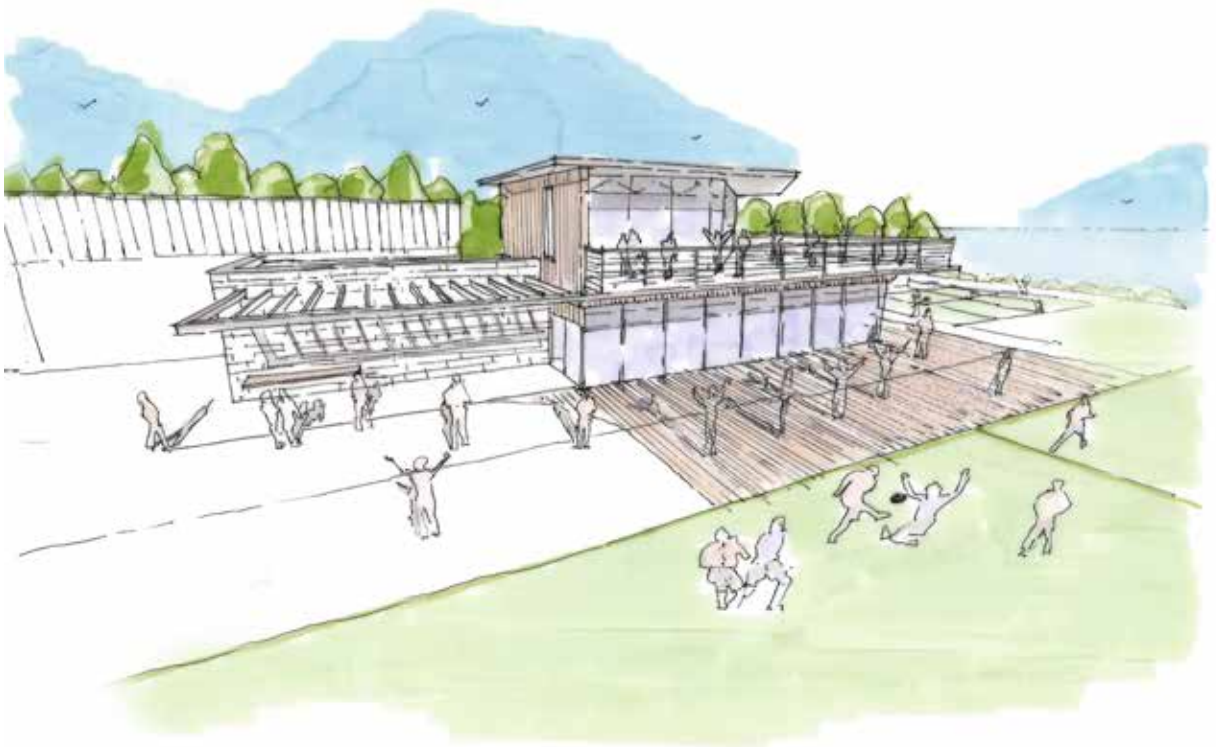
Aerial perspective



Sports Club Proposals

Sketch scheme for the development of a local sports club, re-organising the site to create rugby and football pitches, sports hall changing and hospitality facilities with views out over the River Mersey.

**Sketch
perspective**



Contact us

ABW Architects Limited.
16 Cook Street
Liverpool L2 9RF

Tel: +44(0)151 669 1129
Fax: +44(0)844 412 8107

Please contact
Andrew Brown
or Simon Almond:

Tel: +44(0)151 669 1129
info@abwarchitects.co.uk

RIBA 

North West

With thanks to everyone who has
contributed to ABW over the years;

Simon Almond
Andrew Brown
Dave Anderson
Andrew Connor
Jonathan Shaw
Seán Simpson
Laurie Hampson
Helen Almond
Lisa Harman
James Taylor
Paul Martin
Dan Anderson
Myles Sinnott
Lars Weigand
Tomi Jones
Katherine Ball
Richard Dod
Lydia Cheung
Tom Reynolds

